

Tissue and blood banking: harmonizing the activities

Round Table Discussion

ENASCO - November 15, 2007

- **I. Biobanking collection strategies**
Local limitations
- **II. (Global) standardization challenges**
US <-> Europe
- **III. Clinical validation of biomarkers**
How to attract external samples

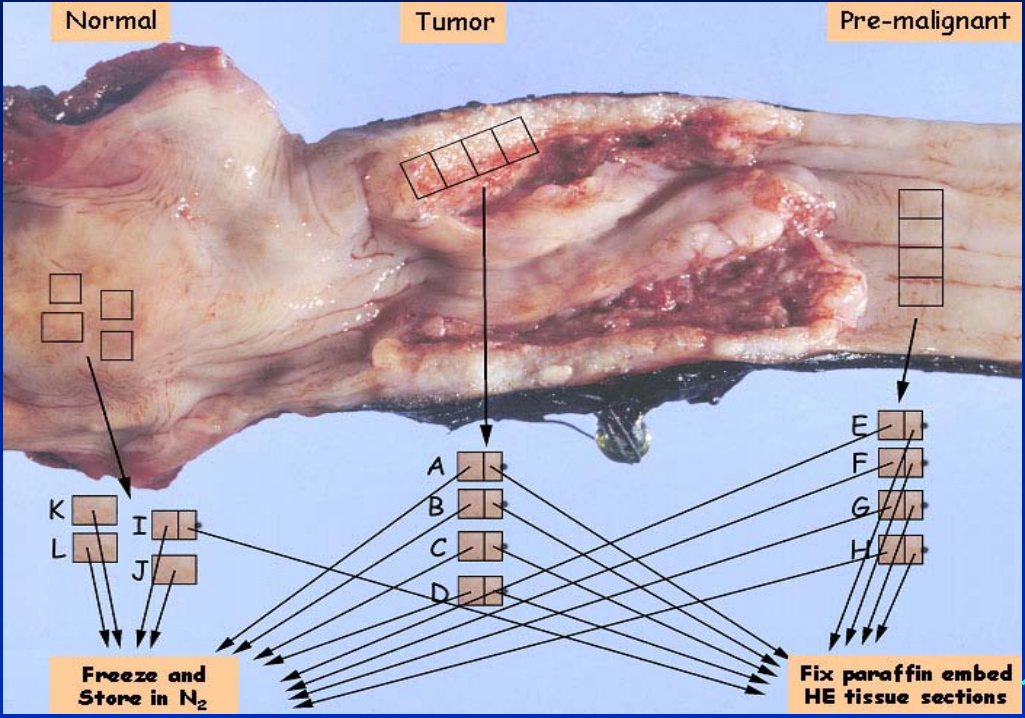
I. Biobanking collection strategies

Example: Routine archive



I. Biobanking collection strategies

Example: Research archive

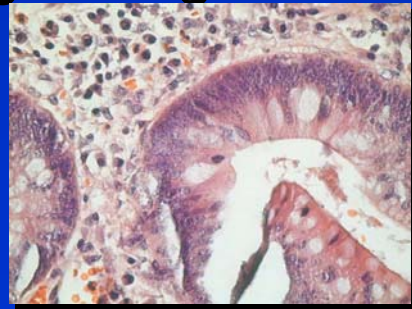


Current collection:
19000 Registered frozen residual
samples from 8000 PA numbers



H&E tissue slides

Digital histologic images



Request for EORTC trial material

- **FFPE Local pathologists reluctant**

Long period of external storage and abundant usage
Law requires 10 year storage of routine samples with
the original lesion intact

- **Frozen tissue issued / not collected at all**

I. Biobanking collection strategies

Efficiently collect frozen and FFPE samples

Communication between the department entering a patient into a trial and the sample collecting department (Pathology, Clinical Chemistry)

Available at the time surgery is performed

Pop up automatically in workflow

Annotate samples with trial number in database
Extra FFPE blocks for central repository

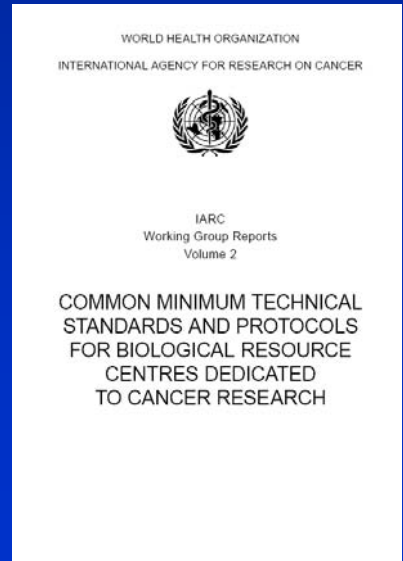
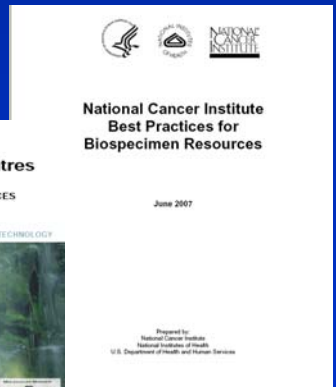
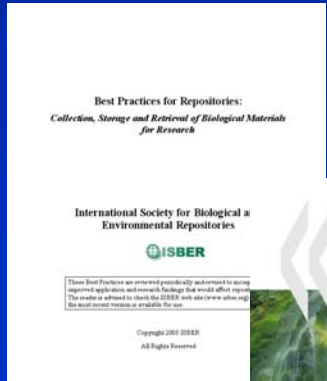


II. Global Standardization Challenges

- **Protocols for collection**
- **Communication (Annotation)**
- **Exchange**

II. (Global) Standardization Challenges Protocols

- Guidelines for Biobanking, ISBER / NCI / OECD
- OEI TuBaFrost Standardization for Frozen Tissue
- IARC Minimal guidelines and standardization



II. (Global) Standardization Challenges Communication

- **Coding lists**
 - **Snomed**
 - **ICDO-10**
- **Minimal dataset**
- **Annotation**

II. (Global) Standardization Challenges Exchange

- **Juridic**
Informed consent
- **Transport**
IATA rules
- **Access**
Biological Resource Center (BBMRI)

- **Large amounts of samples**
- **Access and use must reflect to a larger extend the donor standpoint**
- **“My syndrome” needs to be set in a win win environment**

Institutes need local adaptations

- **Communication on prospective collections**
- **Standardization on collection and annotation**
- **New access and IPRs models needs to be set in a win win environment**

Open Discussion